

GENIUS
School
Food
Network



**QUEEN'S
UNIVERSITY
BELFAST**

The GENIUS (Generating Excellent Nutrition in UK Schools) network: what does it mean for schools?

Overarching aim: to build a community working towards a more health-promoting food and nutrition system in UK schools

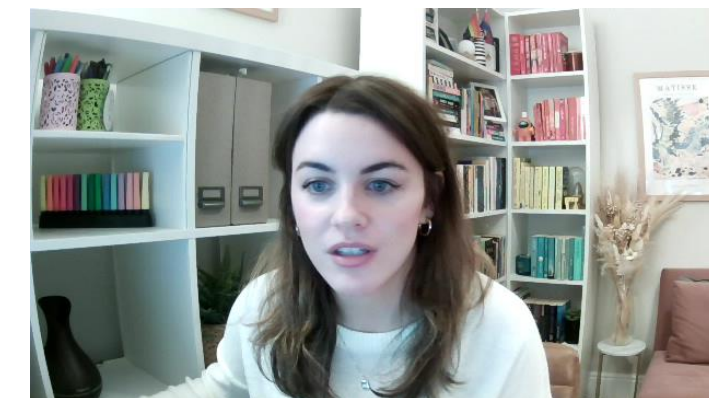
Dr Niamh O'Kane, Professor Jayne Woodside

Queen's University Belfast

geniusschoolfoodnetwork@qub.ac.uk

@GeniusSFN



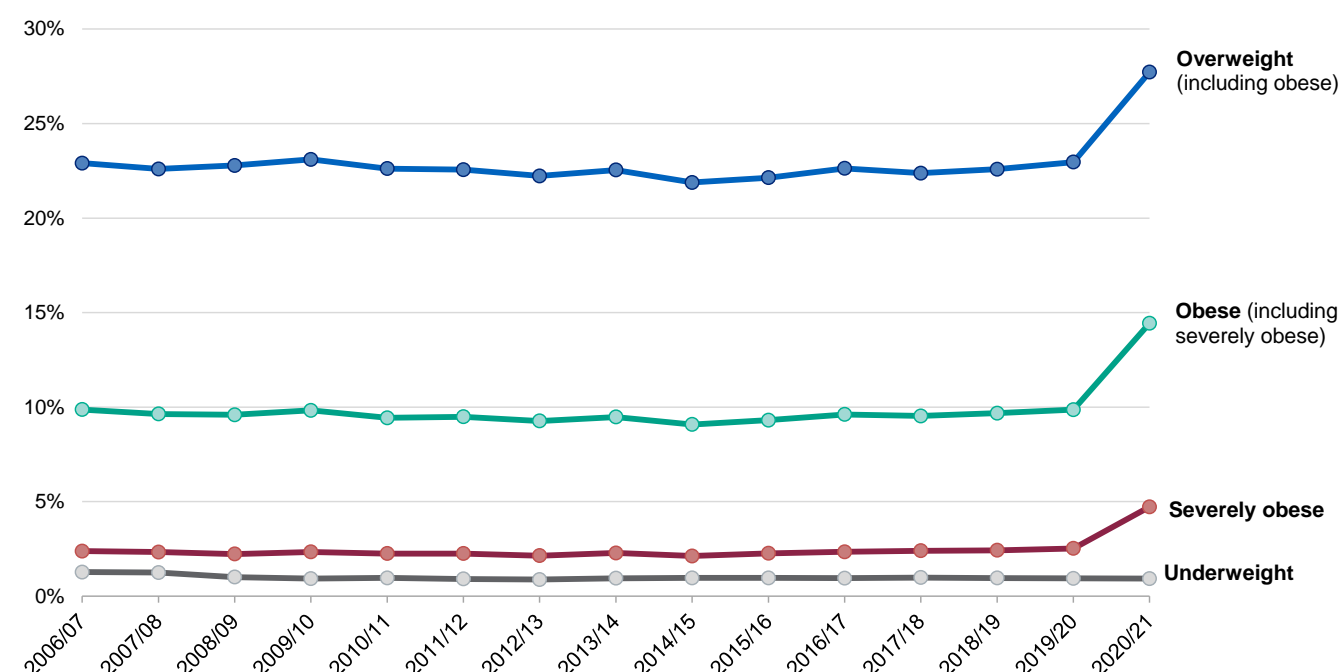


UK children's diets:

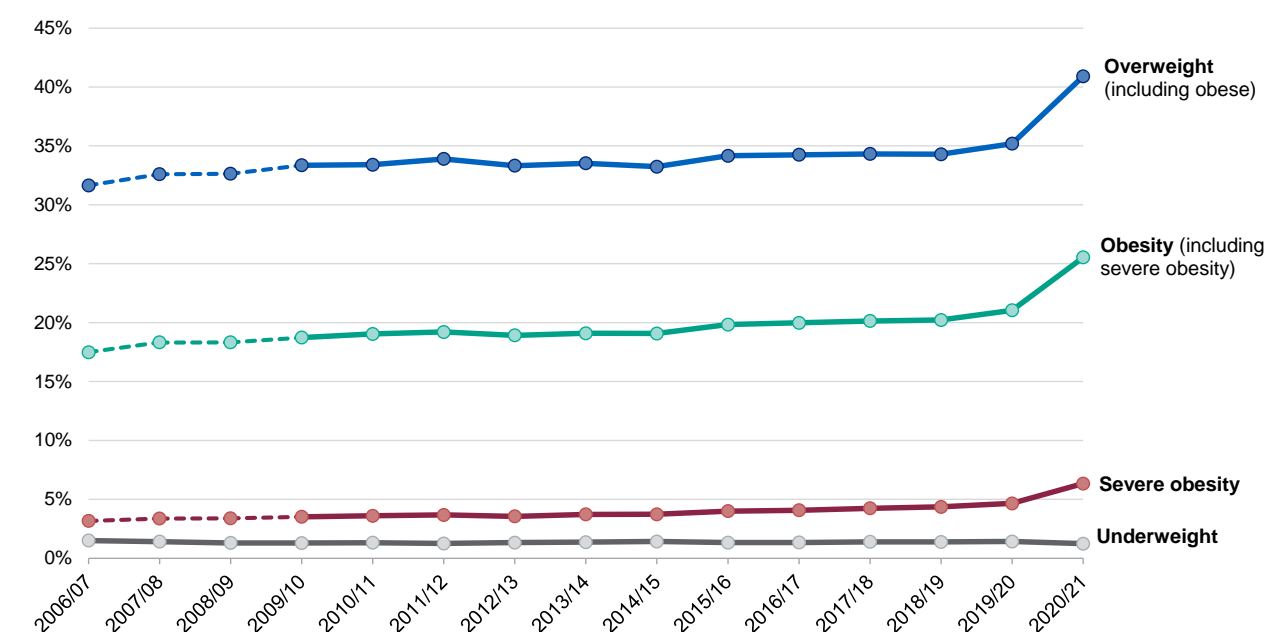


Only 8% of UK 11-18 year olds are meeting the “5-a-day” guideline, with socioeconomic differentials

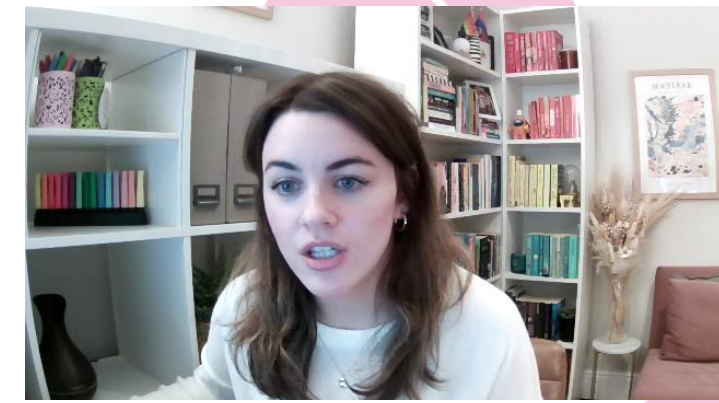
Reception



Year 6



What did the network set out to do?



WS1 :
Building
the
network

WS 2:
Understandi
ng the
current
system

WS 3:
Sustaining the
network and
driving impact

- Build a network of researchers and non-academic stakeholders working within the UK food and school systems
- Facilitate interactions that do not currently exist
- Build research capacity regionally and UK-wide
- Gather data regarding the school food system in the four different UK nations
- Use innovative research methodologies to understand how the school food system operates as a complex adaptive system and how the network develops and functions
- Identify areas of best practice that may lead to more evidence-based practice and policies in relation to school food; to co-produce with project partners and stakeholders key priorities in terms of changes to practice to be recommended to schools
- Co-produce with project partners and stakeholders key priorities in terms of research questions
- Use pump-priming funds to support data collection and develop larger scale funding applications co-produced with decision makers and users



School Food Survey

GENIUS and the School Food Review (review of school food policy in England led by School Food Matters, BiteBack2030 and Food Foundation)

Versions for those involved in operational matters and other stakeholders and users; *1280 participants (teachers, parents, caterers, pupils, policy makers, researchers, nutritionists, etc.); June-Sept 2021*



GENIUS
School
Food
Network



GENIUS
School
Food
Network

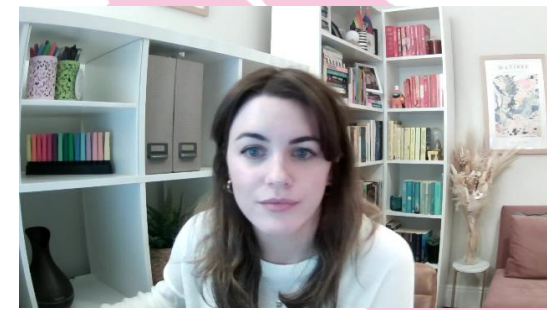
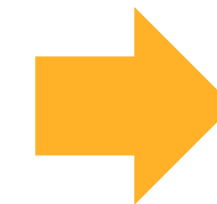
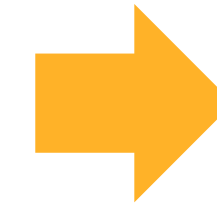
SCHOOL FOOD RESEARCH PRIORITY SETTING PROCESS

Process informed
by the James Lind
Alliance



GENIUS
School
Food
Network

- 1 Create steering group
- 2 Gather evidence uncertainties
- 3 Summarise responses
- 4 Evidence checking
- 5 Interim priority setting
- 6 Workshop & Follow-up
- 7 Publish & promote Top 10 priorities



Survey 1
n=1280 participants

Outcome:
136 research
questions
(16 themes)

Survey 2
n=107 participants
Outcome:
19 research questions

Workshop:
n=30 participants
Outcome:
18 research priorities
(including the Top 10)

School Food: Top 10 Research Priorities

1

What is the value to pupils' health and well-being of a UFSM vs means-tested FSM policies, which may have different criteria for eligibility?

2

How can we improve uptake of FSM for those who are eligible?

3

What are the facilitators and challenges for decision-makers to engage with and prioritise school food?

4

How can school food systems deliver school meals to pupils while keeping within the school food standards, procurement requirements and budgets?

5

How do we implement changes to FSM policies (e.g. extended or UFSM) to achieve optimal participation and benefits?

6

How do school food policies and interventions impact on and address inequalities in pupils from different sub-groups?

7

How can policies create a positive food culture and affect pupils' relationships with food?

8

How do we overcome the challenges that schools have in implementing an optimal eating environment?

9

What innovative approaches can be used to help drive uptake of healthy food consumption in schools?

10

What is the impact of food consumed at school on pupils and to what extent can it reduce inequalities?

Abbreviations

FSM: Free School Meals

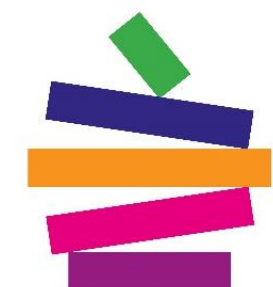
UFSM: Universal Free School Meals



What does it mean for schools?



- Ten priorities for school food related research were identified, covering the topics subsidisation of school meals, implementation of policy and food standards, leadership, inequalities, social norms and nutrition.
- Teachers have played a really important role amongst other school staff and stakeholders to identify these priorities.
- This research will help to guide policy makers, researchers and others to areas related to school food that are most important to focus on and are likely to make the biggest difference to pupils diet, health and well-being.



GENIUS
School
Food
Network

MAPPING THE SCHOOL FOOD SYSTEM



Produce a comprehensive and visual overview of the factors driving food choice in a secondary school food setting

1) Pre-workshop survey with school stakeholders

- Participants asked to identify which factors driving food choice
- Responses collated and categorised

*"Please identify **factors** you believe drive food **choice** within the secondary school food system"*

2) Group model building workshop

- Online workshop with school stakeholders (n=13)
- Interactively produce the map using online software (STICKE)

*"Do you think this map **accurately represents** the food system for you, your peers, and your school?"*

3) School workshops

- Feedback gathered from two secondary schools (n=17 pupils)
- Changes made to map based on feedback

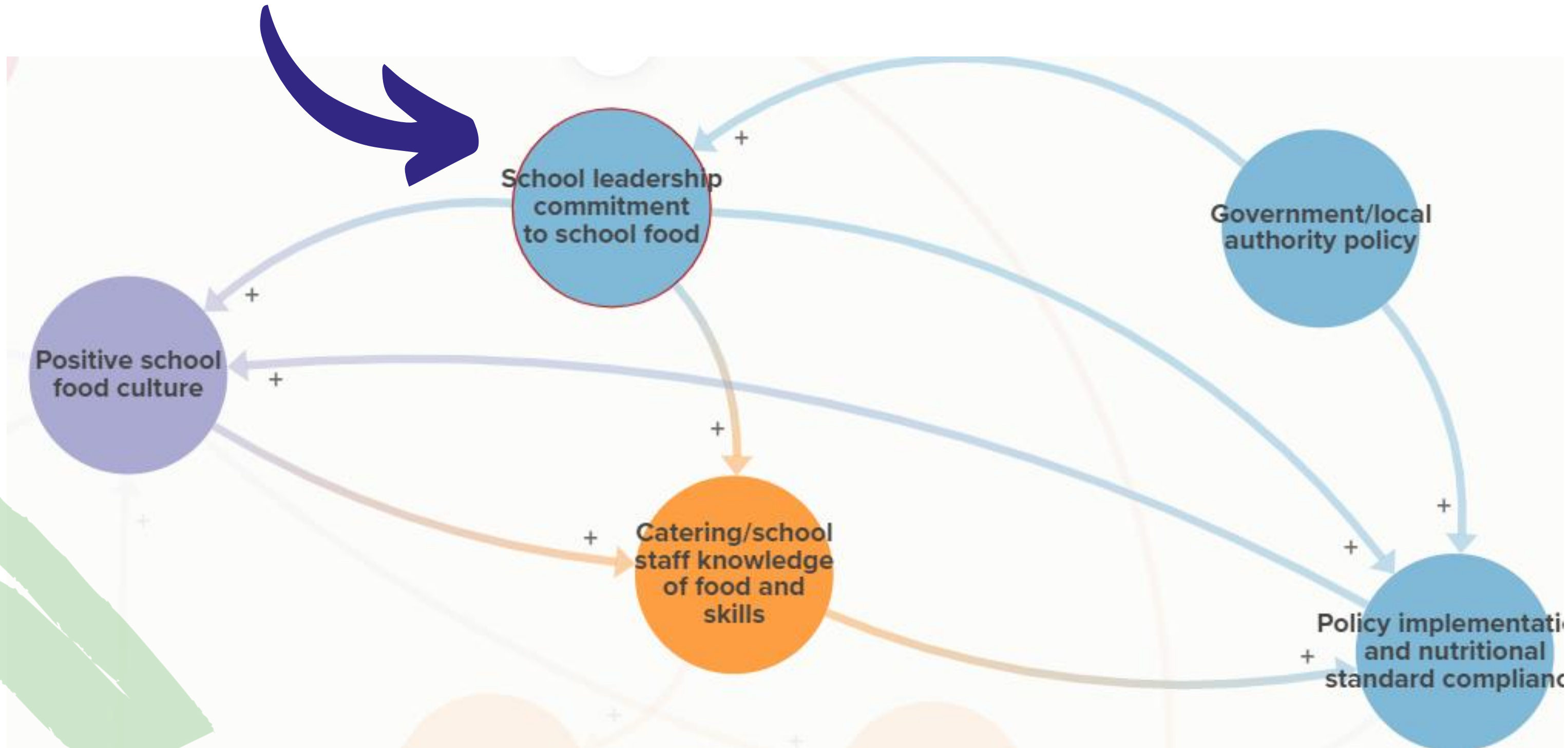
4) Circulation of final map with stakeholders for comment



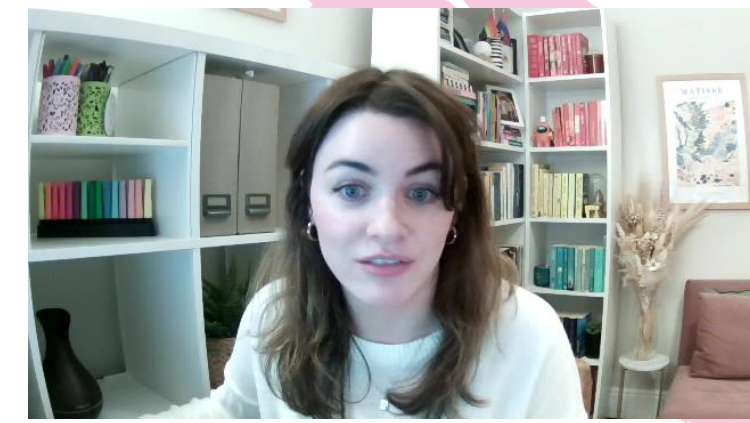
GENIUS
School
Food
Network



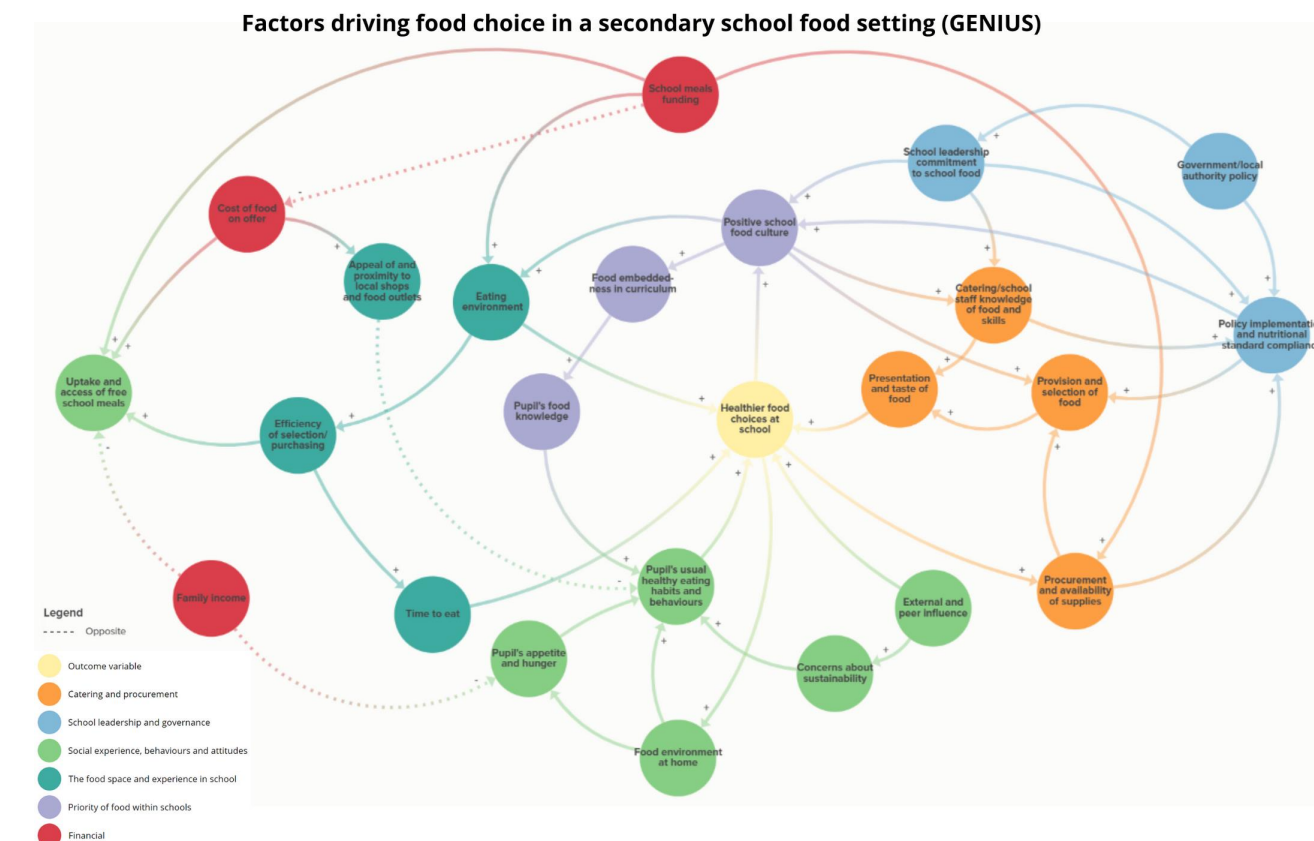
Visualise direction of influence of factors (what factors influence other factors, and is this a positive or negative influence?)
Demonstrates potential systemic benefits of intervention within one factor



What does it mean for schools?



- Our map demonstrates the complexity of the school food system and the many factors at play
- This research can be used to help visualise the impacts of changes made within the school food system

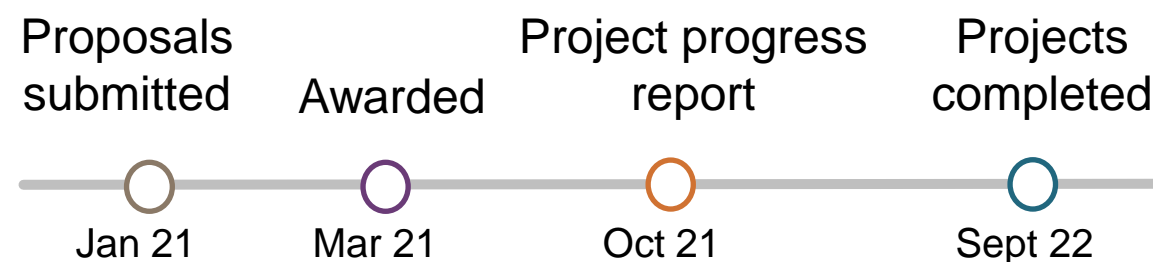


GENIUS
School
Food
Network

Pump priming



- Specific guidelines
- Small scale research projects
- Independent panel reviewed against set criteria
- 4 projects awarded funding (£29K total; ~£7k each)



Ulster University

PI: Prof A Gallagher
Effectiveness of a peer-led school based intervention to promote healthy food choices in adolescents: a pilot feasibility study

University of Wolverhampton

PI: Dr G Singh Lalli
Secondary school food policy approaches across the UK



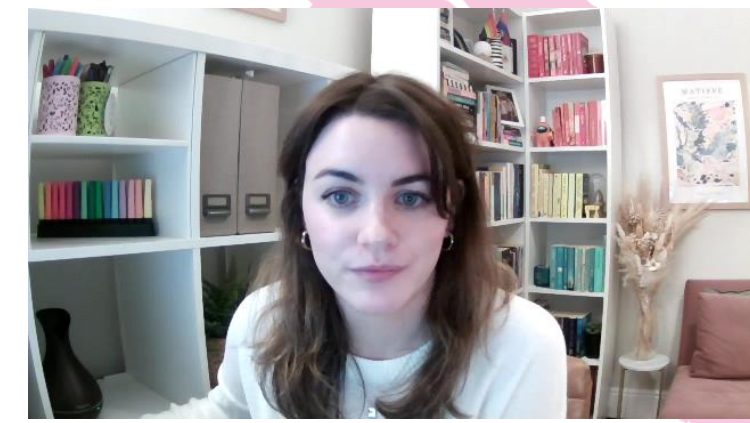
University of Dundee

PI: Prof A Anderson
An assessment of the role of Parental Networks on uptake of school meals

University of Birmingham

PI: Dr M Murphy
Acceptability and feasibility of choice architecture to promote healthy dietary choices in secondary school canteens: a qualitative study with catering staff

MAPPING THE NETWORK



To **visualise the interactions** and engagements among Co-Is of the GENIUS Network, and **provide indication of success** of the network in forming **new relationships** and collaborations within school food

- Online survey disseminated among named co-Is from original GENIUS proposal, Sept 2022
- Participants asked to identify which other named co-Is they engage with, and estimate how long they have had a working relationship with regards school food
- Online mapping software (Kumu) used to input survey data
- Network mapped and duration of relationships summarised

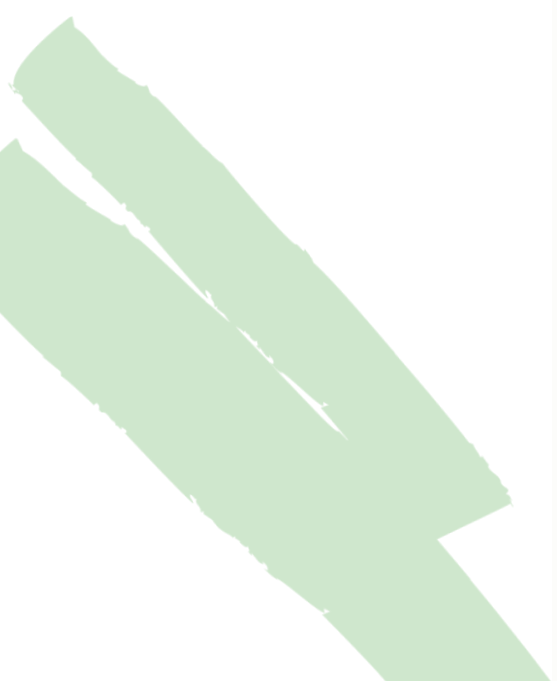
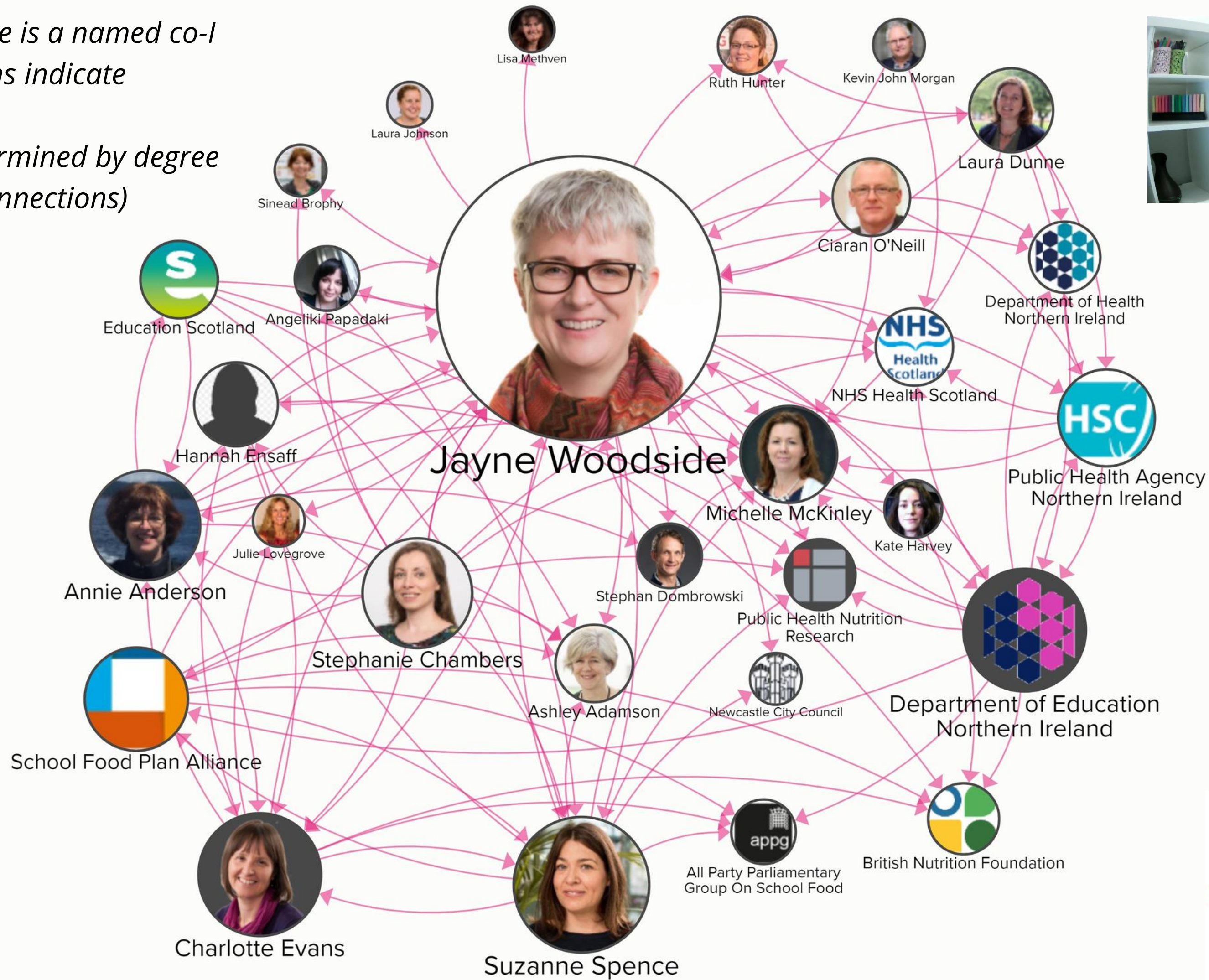
"Please identify the individuals/ organisations you engage with"

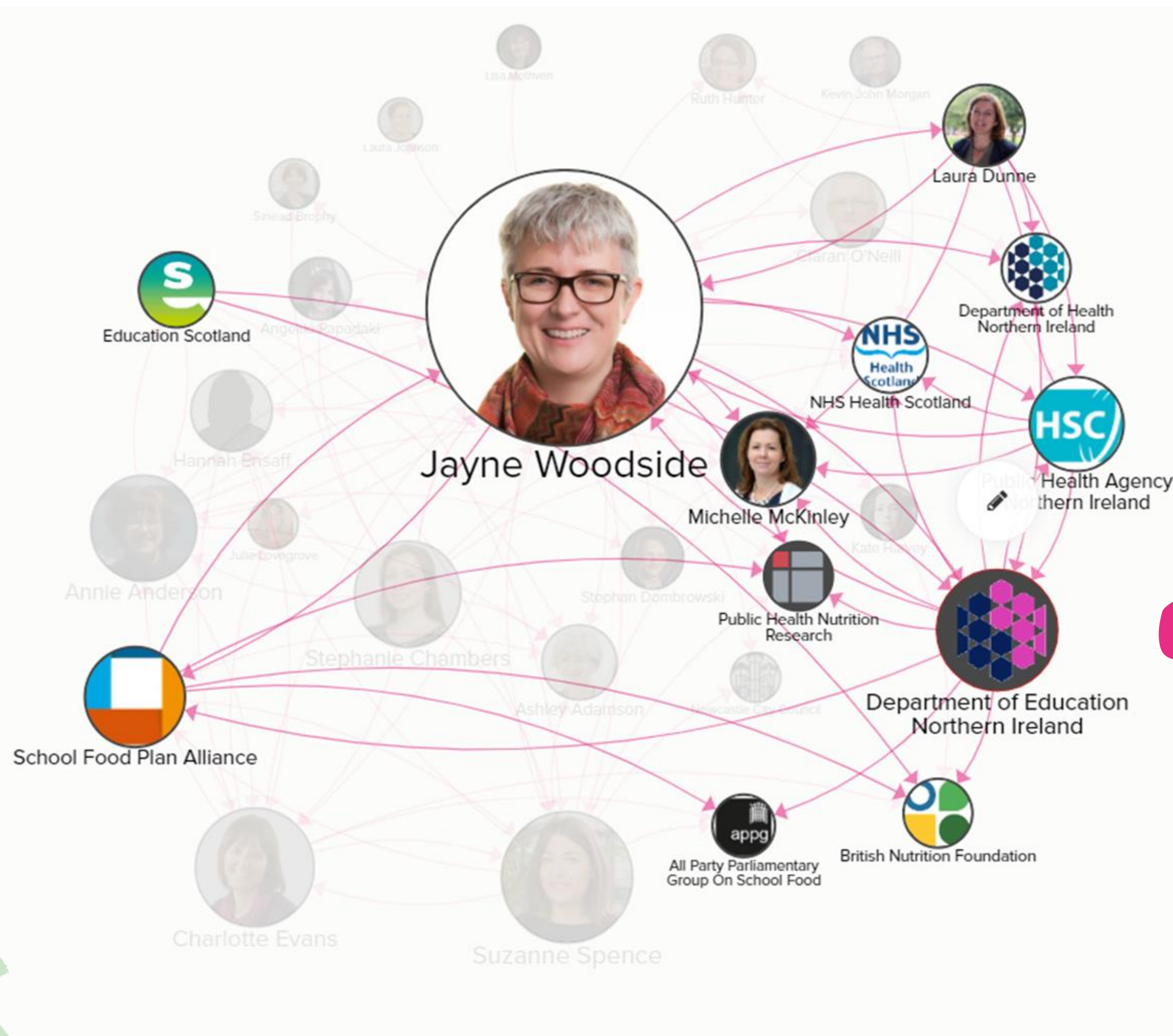
*"Please estimate **how long** you have been collaborating, in years"*



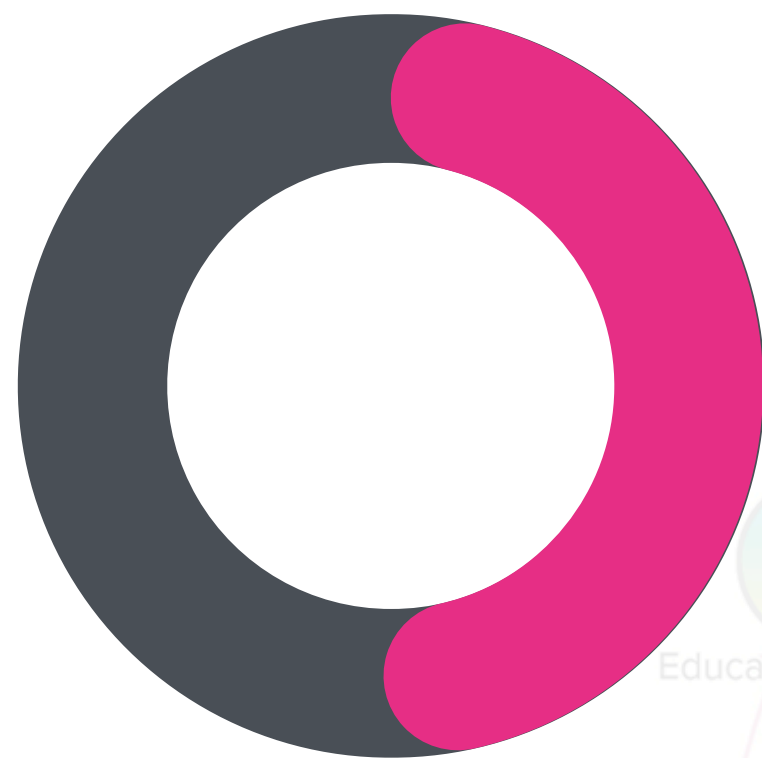
GENIUS
School
Food
Network

Each element/circle is a named co-I
Arrows/connections indicate relationship
Size of image determined by degree (i.e., number of connections)



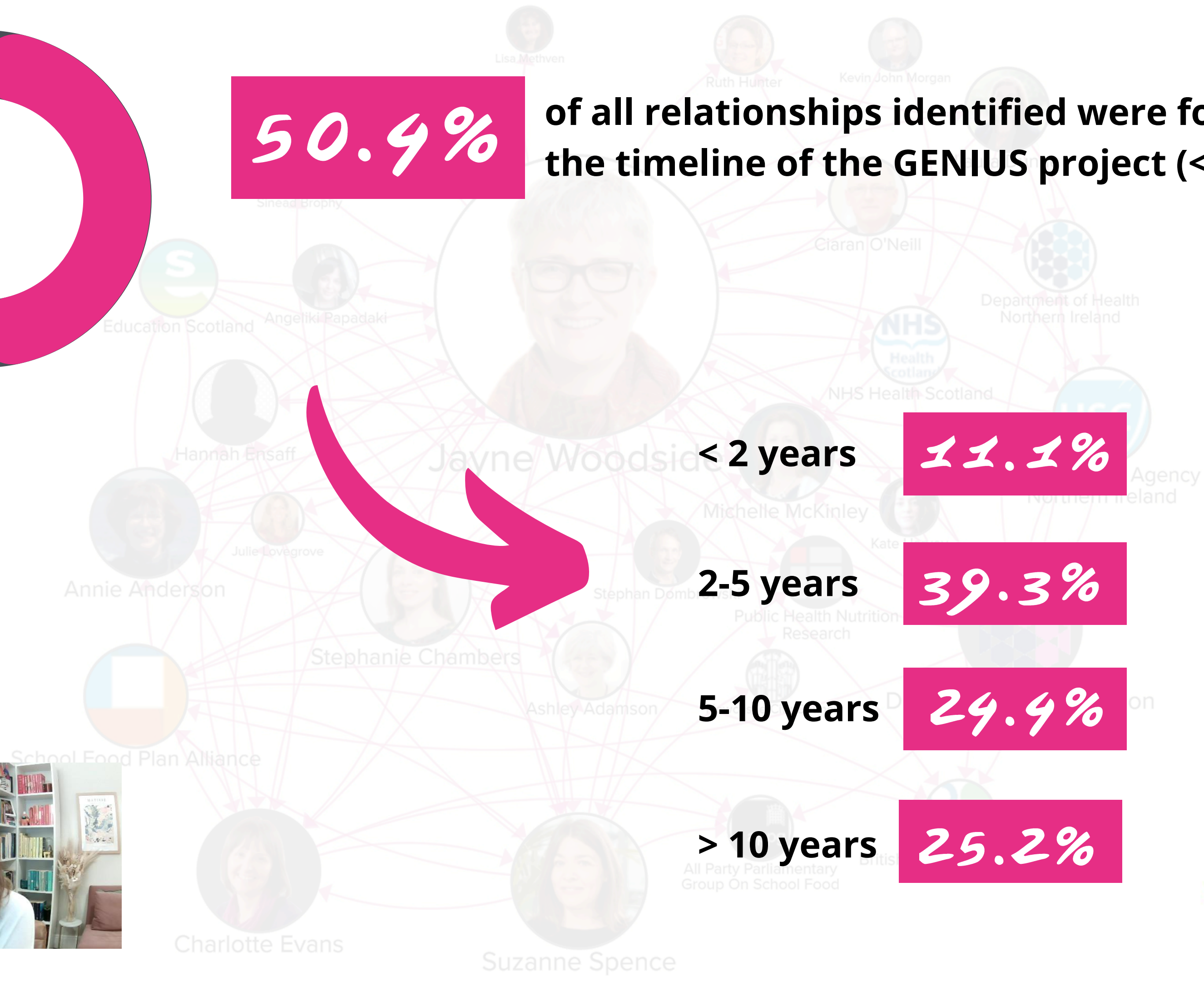


GENIUS
School
Food
Network



50.4%

of all relationships identified were formed within the timeline of the GENIUS project (<5 years)



< 2 years

11.1%

2-5 years

39.3%

5-10 years

24.4%

> 10 years

25.2%



**GENIUS
School
Food
Network**

Other key achievements



- Grant funding
 - PhD studentships
 - MRC PHIND
 - NIHR PHR
 - NIHR Policy Research Programme



Medical
Research
Council



NIHR | National Institute for
Health and Care Research

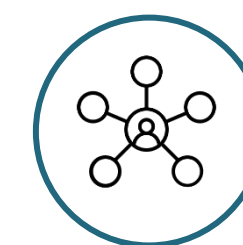


- Nutrition Society SIG – member communications
- Nutrition Society SIG and UKSBM SIG - dissemination



Social media

- GENIUS website
<https://geniusschoolfoodnetwork.com>
- GENIUS Twitter @GENIUSSFN; 428 followers



Engagement

- APPG School Food
- School Food Plan Alliance
- Global Research Consortium for School Health and Nutrition

MEMBER FEEDBACK

Online survey circulated among GENIUS members (n=39 valid responses)



68.4%

respondents stated that participation in the GENIUS network helped them **develop new relationships** or collaborations in the area of school food

Interacting and networking with individuals in roles and institutions similar to and different from their own

&

Accessing new resources, information, knowledge, expertise and training

THE MOST USEFUL OPPORTUNITIES FOR MEMBERS



GENIUS
School
Food
Network

We are looking for teachers who want to make a difference.

Why?

We are looking for the unique perspectives from teachers to help us inform a large research study being conducted in Northern Ireland (2023-2025).

The aim of the study is to evaluate **free school meals** in **secondary schools**.

What?

You will be invited to:

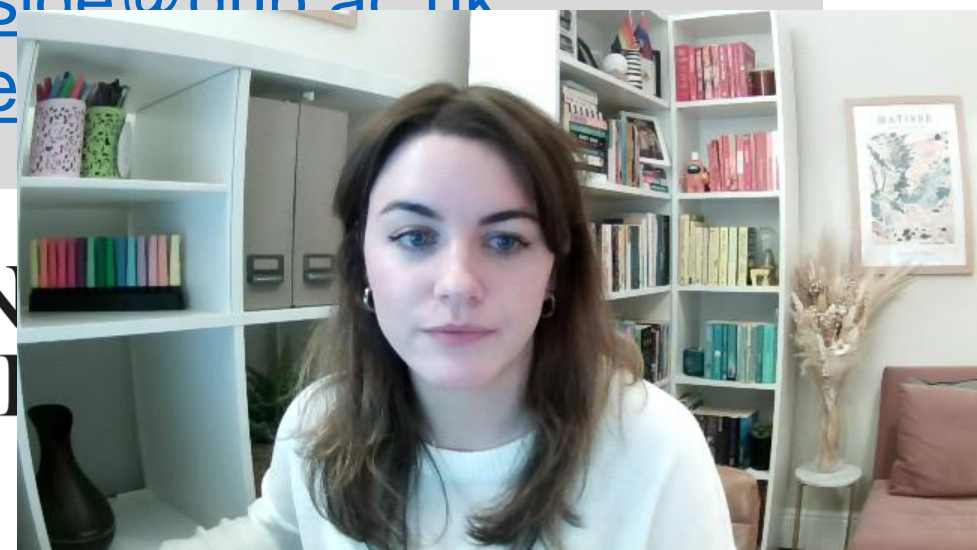
- Join informal meetings
- Give your opinion on pupil & parent recruitment, data collection, design of study materials, etc.
- Help make research more meaningful and impactful

Also...

If your school is also interested in taking part in this study, please let us know and we will be happy to share more information.

Contact:

j.woodside@qub.ac.uk
d.schlie@qub.ac.uk



CALLING PRIMARY SCHOOL TEACHERS

Tell us your thoughts and experiences about food and nutrition education (even if you don't teach it right now)!

Take an anonymous 15 minute survey and go into the draw to win one of five **£30 gift vouchers**

www.redcap.link/foodeducation

REFERENCE NUMBER: HEAG-H 127_2022



QUEEN'S
UNIVERSITY
BELFAST





geniusschoolfoodnetwork@qub.ac.uk

@GeniusSFN

Acknowledgements

This work is supported by the UK Prevention Research Partnership (MR/S037608/1), which is funded by the British Heart Foundation, Cancer Research UK, Chief Scientist Office of the Scottish Government Health and Social Care Directorates, Engineering and Physical Sciences Research Council, Economic and Social Research Council, Health and Social Care Research and Development Division (Welsh Government), Medical Research Council, National Institute for Health Research, Natural Environment Research Council, Public Health Agency (Northern Ireland), The Health Foundation and the Wellcome Trust.



THANK YOU

geniusschoolfoodnetwork@qub.ac.uk

@GeniusSFN

niamh.okane@qub.ac.uk

@okaneniameh

